

PVHS THEATRE

DR. JOSEPH J. POLI, JR. AUDITORIUM



CRUSH

by Stephen Gregg

THURSDAY, NOVEMBER 16, 2017 AT 7 PM

FRIDAY, NOVEMBER 17, 2017 AT 7 PM

SATURDAY, NOVEMBER 18, 2017 AT 1 PM & 7 PM



DOMANIRESTAURANTS.COM



PRIVATE PARTY ROOM

AVAILABLE FOR YOUR NEXT SPECIAL EVENT:
FRIENDS/FAMILY/OFFICE/CLUBS/ORGANIZATIONS

**BIRTHDAYS • SHOWERS • COMMUNIONS
CONFIRMATIONS • REUNIONS**

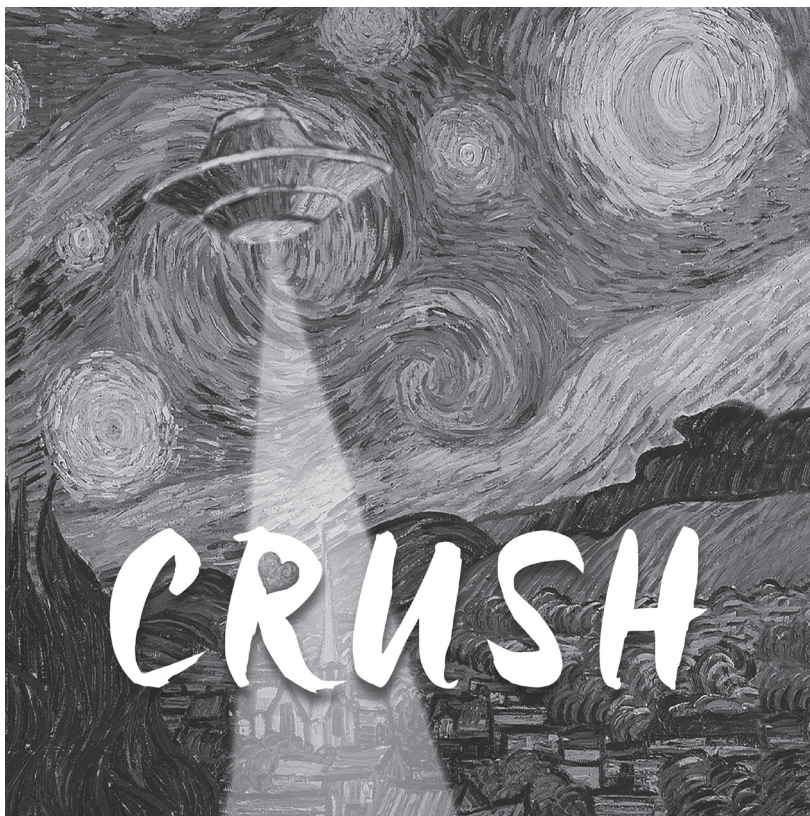
ASK FOR OUR GROUP PARTY MENU

DOMANI HILLSDALE

Your Local Italian Restaurant

387 WASHINGTON AVENUE - NEXT TO KINGS
201-722-8881

Pascack Valley High School Theatre presents



CRUSH

by STEPHEN GREGG

Production directed by
Mrs. Merielle Lupfer & Mr. Tom Lupfer

CRUSH is produced by special arrangement with the Dramatic Publishing Company of Woodstock, Illinois. www.dramaticpublishing.com

The videotaping or other video or audio recording of this production is strictly prohibited.

A Word from the Directors...

It is a great joy, and a rare one, to find a script that is hilarious, heartwarming, and features a large enough cast to accommodate all of the students interested in being a part of a PV Theatre show. It is a tremendous bonus if a script is new, and therefore presents the exciting challenge of designing and staging a show with little or no reference material. You can imagine our delight when we came upon Stephen Gregg's *Crush*.

The icing on the cake was the discovery that *Crush* was framed around and inspired by a classic – arguably the classic – American play, Thornton Wilder's *Our Town*. As educators as well as artists, we're always eager to incorporate theatre history into our theatre season; indeed, these students' work on this play began with a look at *Our Town*. For those of you who may not be familiar with it, a quick crash course follows.

Our Town presents a glimpse into small-town life at the turn of the 20th century as a representation of the universal human experience. The first act focuses on daily life, the second on love and marriage, and the third on death: a microcosm of the cycle of life. The best-known passage from the script is Emily's farewell to her life on Earth – “Good-bye, world! Goodbye Grover's Corners...” – spoken after she has returned from beyond the grave to re-experience one day with her family. Before returning to her place in the cemetery she makes the wistful, tearful realization that people are too busy living their lives to notice how beautiful those lives are, even in their simplicity. Audiences have, for nearly a hundred years, recognized their own lives and loves celebrated as worthy and noble by this powerful play.

The worth and the power of the love we share – among friends, families, communities – is similarly celebrated in *Crush*. In fact, there is plenty you will see in this play that you would also if you were at a production of *Our Town*, right down to the production design. There are no elaborate sets or props. Rather, the actors pantomime the use of physical objects, and simple furniture suggests a myriad of locations. You, the audience, are invited and expected to engage consciously with the storytelling to make it complete. Parallels are present, too, in the unfolding of the plot, with depictions of everyday small-town life, and young people making their way through their first, awkward explorations of romance...

And then, you know, there are the aliens.

Because this play's setting and sensibility is contemporary. More and more, our ordinary days are being disrupted by extraordinary events. Our everyday lives require confronting big questions about what we value, what we believe, and what is true. *Crush* raises and amplifies these questions. Do we need to see something with our own eyes to be able to believe it? Or does belief in something make it easier to see? Does belief in something make it true? When do we trust what we feel more than what we see or hear, and what are the consequences?

The arts help us confront all that life is – full of big questions, full of small joys – and hopefully recognize the beauty in all of it. It is a great joy, and a rare one, to get to work with such dedicated, creative, and talented students as we have at PV to put new art into the world.

Tom Tyler Maillb. Lyfe

Pascack Valley Regional High School Administration

Mr. P. Erik Gundersen, *Superintendent of Schools*

Mr. Jeffrey Steinfeld, *President, Board of Education*

Mr. Thomas DeMaio, *Principal*

Mr. John Puccio, *Assistant Principal*

Mrs. Debbie Squicciarri, *Assistant Principal*

Special Thanks from the Production Staff to:

PVRHS Board of Education

The Friends of PVHS Theatre for their dedication of time and energy to supporting PVHS Theatre.

PV Theatre Director's Circle Sponsors

Our amazing cast, for taking this journey with us. We are amazed by your creativity.

Our amazing crew, for realizing our vision and creating a new world on our stage.

Mrs. Kathy Abney and Mr. Greg Blair for donating their time, talents, and warm and giving spirit to our work. We are so grateful.

Mrs. Elise Campbell, for serving as production photographer.

Mrs. Jennifer Snyder for arranging for the delicious meals during production week.

Our PV Theatre alumni, for continuing to collaborate and create art with us.

Ms. Maria Delehanty, our makeup designer, for sharing her skills with us.

The PVHS administration, for giving us the freedom to explore and create theatrical worlds.

The parents of our cast and crew, for sharing your talented students with us, and supporting their participation.

You, the audience, for supporting the arts in education by attending this production.

We look forward to greeting you again for HOW TO SUCCEED IN BUSINESS WITHOUT REALLY TRYING, March 15-17, 2018.

ANNOUNCEMENTS



- ★ There is no food or drink permitted in the theatre.
- ★ Smoking is prohibited on school grounds.
- ★ Please **POWER OFF** all wireless devices, as their use interferes with our sound system, and they are a distraction to fellow audience members and our performers.
- ★ Text messaging is prohibited during the performance.
- ★ Fire exits are located at the rear of the auditorium, and to the right of the stage.
- ★ Please remain seated at all times during the performance. If you must leave the theatre, please do so during a pause or applause.
- ★ Flash photography is strictly prohibited, as it is a danger to the actors, and a distraction for fellow audience members.
- ★ PVHS is equipped with an AED (Automated External Defibrillator), located in the lobby outside the main office. Please see an usher or the house manager for assistance.

PVHS THEATRE PROGRAM MISSION STATEMENT

The extracurricular theatre program of Pascack Valley High School is committed to mounting high-quality productions that provide a rich educational and theatrical experience for its participants and audiences. We will continually strive to present work of artistic and thematic significance to our community, in the hopes that students, teachers, and spectators alike will be moved by our work to feel deeply and think deeply.

“Art is humanity’s most essential, most universal language. It is not a frill, but a necessary part of communication. The quality of civilization can be measured through its music, dance, drama, architecture, visual art and literature. We must give our children knowledge and understanding of civilization’s most profound works.”

– ERNEST L. BOYER

Cast of Characters

(in order of appearance)

Bark	Zachary Panno
Winn	<i>Rachel McCambridge</i>
Lincoln	Kyle Rifkin
Cole	<i>Ryan Muska</i>
Aspen	<i>Keara Fernandez</i>
Chloe	<i>Julia Ganbarg</i>
Clair De Lune Girl.....	<i>Amy Santo</i>
Jessica	<i>Jessica Snyder</i>
Maybelline	Madeline Campbell
Devon.....	Natalie Moscatello
Theodora Prokopiak.....	<i>Christina Quezada</i>
Crooper.....	<i>Kax Petkovich</i>
Aspen 2	<i>Carleigh Boyle</i>
Crick.....	<i>Kim Culshaw</i>
Flx.....	Aaron Correa
(Exhalation).....	<i>Erin Hollar</i>
Magdalena Seth.....	Jaiden Price
Firecrackamundo Announcer	<i>Patrick Sheil</i>
Lisa Finch-Fox	<i>Taylor Allgor</i>
Government Official	Kyle Towey

Ensemble: Nabeeha Fatima, Skylar Fay, *Ryan Green*, Amanda Kersh,
 Nina Lang, Jason Leibfried, Isabella Ligouri, *Nick LoCicero*,
 Emily Moriarty, Dylan Schnur, *Olivia Stabile*, Kyle Towey

Italics = Member of International Thespian Society Troupe #7427

Student Production Staff

Production Stage Manager

Benjamin Bachrach

Assistant Stage Managers

*Rachel Brunn, Leah Kay,
Joshua Ozawa-Morriello*

Light Board Operator

Rachel Brunn

Costume, Properties, Hair, Makeup Crews

*Julianna Bermudez, Jessica Flatley,
Tara Healy, Mackenzie Klink,
Samantha Klink, Bridget McLearnie,
Amelia Moran, Jordyn Puzzo,
Cassidy Smith, Blythe Thomas,
Angelina Zervoudis*

Sound Operator

Shawn Rowan

Scenic Construction/Painting/ Stagehands

*Aidan McBride, Nate Callendar,
Heather Flatley, Meghan Haggerty,
Noah Joroff, Kristen Kiernan,
Gus Koeniges, Reid Lauber,
Julianne Lopez, Emily McAuliffe,
Rachel Quezada, Shawn Rowan,
Lauren Shill, Olivia Stabile,
Sarah Tamagny*

Headshot Photos

Heather Flatley

*Italics = Member of International Thespian
Society Troupe #7427*

BRAVO!

The Friends of PV Theatre applaud the creativity and dedication of our directors Tom Lupfer & Merielle Lupfer.



PV Theatre is a proud member of the International Thespian Society, an honorary organization recognizing student achievement in theatre.

Troupe #7427 Officers

PRESIDENT	Amy Santo
VICE PRESIDENT	Carleigh Boyle
SECRETARY	Rachel McCambridge
TREASURER	Julia Ganbarg
HISTORIAN	Rachel Brunn

Production Staff

Directors

Mr. Tom Lupfer and Mrs. Merielle Lupfer

Producer, Technical Director

Mr. Tom Lupfer

Costumer

Mrs. Merielle Lupfer

Associate Technical Director

Mr. Adam Farnan '12

Lighting Design

Ms. Erin O'Brien

Sound Design

Mr. Jon Melchiorre '15

Scenic Painting Design

Ms. Samantha Riley '16

Scenic Design

Mr. Tom Lupfer,
Mrs. Merielle Lupfer,
Mr. Adam Farnan '12

Special Effects Makeup Design

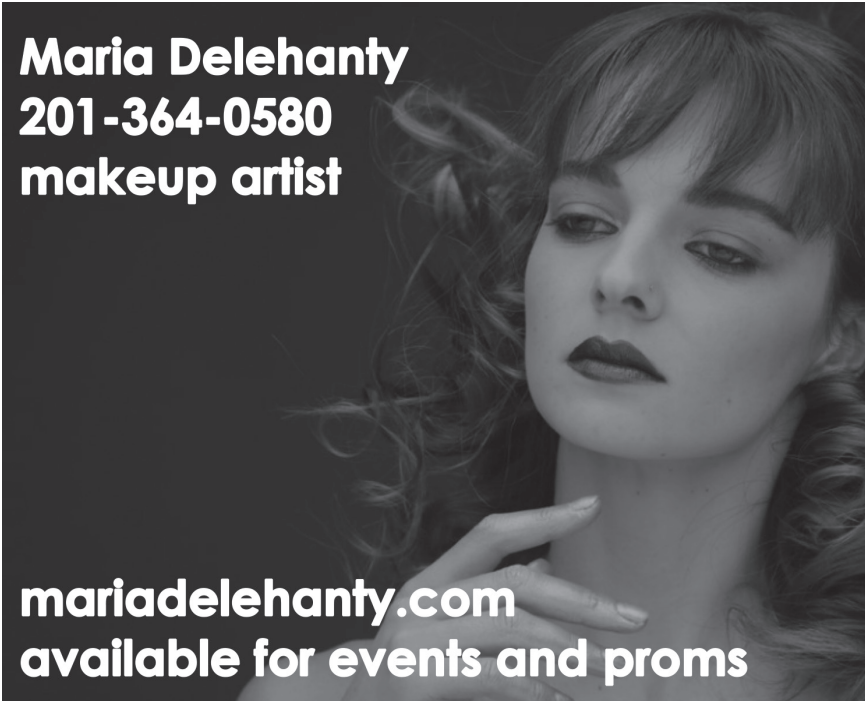
Ms. Maria Delehanty

Ticket Services

Mrs. Tracy Ganbarg,
Mrs. Esther Petkovich

Graphic Designer

Mrs. Kathy Abney



Maria Delehanty
201-364-0580
makeup artist

mariadelehanty.com
available for events and proms

The Cast



Taylor Allgor (Lisa Finch-Fox) Taylor is a senior appearing in her seventh show with PV Theatre. Her previous shows include: *The Dining Room* (Agent/Winkie), *Anything Goes*

(Construction/Run Crew), *Letters to Sala* (Frymka), *Urinetown* (Dr. Billeaux) *Metamorphoses* (Erysichthon's Mother) and *Pippin* (Player). She is so excited to be working on *Crush* with such a wonderful cast and crew!



Carleigh Boyle (Aspen 2) This is Carleigh's fourth and final fall play with PV Theatre. Past roles she has enjoyed playing include *Finale* (Tyler Jenson), *Pippin* (Player), *Metamorphoses*

(Woman, Narrator), *Les Miserables* (Lady of the Night #2), *Urinetown* (Ma Strong), *Letters to Sala* (Elfriede), *Anything Goes* (Girl #3), *The Dining Room* (Aunt Harriet), and *Bye Bye Birdie Jr.* (Mae Peterson) among many others. She also enjoyed being a 2016 director for *24 Hour Theatre* and Assistant Fight Choreographer for *West Side Story*. Carleigh takes part in volleyball, Love Isn't, and Italian National Honors Society when she is not playing with her foster cats.



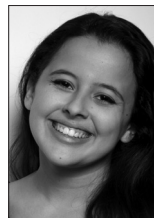
Madeline Campbell (Maybelline) Madeline is a freshman who is very excited to perform in her first PV show! Madeline is playing "Maybelline" in *Crush*. *Crush* is Madeline's first

drama, however she has been in various songs and scenes, both in middle school and Emerson Youth Summer Theatre Institute, such as *Legally Blonde* (Kate), *High School Musical* (Kelsi Nielson), *Shrek* (Princess Fiona), *The Wiz* (Dorothy), *How to Succeed...* (Rosemary), *Annie* (Annie), *Hairspray* (Peggy), *Smile* (Doria), and *Fun Home* (Young Allison). Madeline is so grateful for EVERYONE who helped out during *Crush*, her family, her long time friends and new friends she's met along the way. She wishes the best of luck to everyone participating!



Aaron Correa (Flx) is a senior, and this is his second show with the Lufers. His past credits include *In the Heights*, *Pippin*, *Hair*, and *Thoroughly Modern Millie*.

He is very excited to be in this production and looks forward to performing with such a talented cast.



Kim Culshaw (Crick) is a senior and is thrilled to be working on her seventh show with her PV Theatre family. She was previously in *Anything Goes* (Construction Crew), *The Dining*

Room (House Manager), *Letters to Sala* (Zusi), *Urinetown* (Poor Ensemble), *Metamorphoses* (Laundress), and *Pippin*. In her free time, she listens to music, dabbles in art, and loves being around her friends.

BREAK A LEG
CAST AND
CREW



The Cast continued



Nabeeha Fatima (Ensemble) is a freshman. At Holdrum MS, she appeared in *Shrek the Musical* (Guard/Chorus). At PV, she is also involved with the Smoke Signal. Nabeeha

is very happy to be a part of this production of *Crush*. She cannot wait to make new friends, learn new things, and to laugh and have fun. Nabeeha would like to thank everyone who helped to put together this year's fall play.



Skylar Fay (Ensemble) is a freshman who moved to River Vale in the summer before 8th grade. Previous roles: *A Hairy Tale for the Boys and Girls Club* (Princess Iphigenia),

A Big Bad Wolf Trial for School (Little Red's Mother), *Gordon Hamsey's Kitchen of Flames* (Olivia S. Ellerson) *Shrek the Musical* (Big Bad Wolf). She aspires to be an astronomer and would like to go to Oxford or Cambridge. Skylar is excited to appear in many more plays in the future.



Keara Fernandez (Aspen) is a junior and is thrilled for you to see *Crush*! Keara's past credits include *13* (Lucy), *In The Heights* (Nina), *Thoroughly Modern Millie* (Muzzy).

Keara has been involved in PV Theatre since she was a freshman! Her past credits here are *Urinetown* (McQueen), *Metamorphoses* (Sleep), and *Pippin* (Player). Last summer, Keara was nominated for the National Youth Theatre Award for her role as Nina in *In The Heights*. Keara would like to thank the directors, cast, and crew for putting on an amazing play. She would also like to thank her parents for always believing in her. "Thank you for coming and I hope you enjoy *Crush*!"



Julia Ganbarg (Chloe) Julia is thrilled to be making her 7th performance on the PV stage! She has been singing and acting since she could remember and is super excited to be

part of *Crush*. Her past performances at PV include: *The Dining Room* (Agent/Winkie), *Anything Goes* (Ensemble), *Letters to Sala* (Caroline), *Urinetown* (Billy Boy Bill), *Metamorphoses* (Silenus), and *Pippin* (Berthe). This is Julia's final year at PV and she could not be more excited to continue being a part of the PV Theatre family!

PV Theatre Gear

Homemade Baked Goods & Refreshments

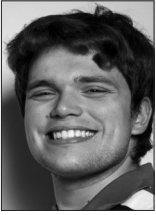
50/50 Raffles

ON SALE IN THE LOBBY

Proceeds benefit PVHS Theatre

Please support the advertisers who support PV Theatre!

The Cast continued



Ryan Green (Ensemble) Ryan is a senior, performing in his final fall play with PV Theatre and beyond excited for it to finally be a comedy! Besides PV Theatre, Ryan made his community

theater debut playing Ham in Old Library Theatre's *Children of Eden* and received a NYTA nomination for his performance as Kevin Rosario in *In the Heights*. He's an active member of Bro Squad here at PV. Ryan thanks his friends and family for their everlasting love and support but gives special thanks to the Lupfers and the entire cast and crew of *Crush* for making his final fall play such a memorable experience. Enjoy the show!



Erin Hollar ([Exhalation]) is a sophomore who is excited to start her second year of PV Theatre with the production of *Crush*. From a young age, she has been involved in theatre. In

the past, she began the opening scene of *The Little Mermaid*, and more recently was featured in *Metamorphoses* and *Pippin*. She is delighted to be working with such a talented cast and crew and wishes them all good luck!



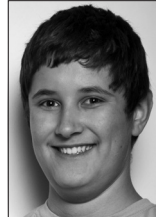
Amanda Kersh (Ensemble) is a freshman and is very excited to perform with PV Theatre for the first time. Amanda loves to act, and has been in many musicals over the years such as *Fiddler on*

the Roof (Golde), *Grease* (Blanche), and *Seussical* (Bird Girl). She wishes the cast of *Crush* the best of luck and a great time performing!



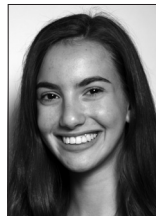
Nina Lang (Ensemble) is a freshman who's excited about the whole new theatre experience at PV! This will be her 4th play and 7th show! She was in two of the three middle school musicals and she

hopes she can be in a lot more shows here at PV and was in minor productions over the past three summers. She first found her passion at the age of five, and she hopes now that this 10th year of her love for theatre will be the best year yet!



Jason Leibfried (Ensemble) Jason is a sophomore and is appearing in his third show with PV Theatre. Jason recently performed in the ensemble of *Pippin* and in *Metamorphoses*

as Narcissus. Other shows that he has been in are *The Wizard of Oz* (Cowardly Lion), *Legally Blonde The Musical* (Kyle/Ensemble), *Beauty and the Beast* (Beast), *The Lion King* (Scar), *High School Musical* (Ensemble), and *Aladdin* (Guard). Jason wants to thank the Lupfers for all their hard work and dedication. He also wishes the amazing cast and crew of *Crush* best of luck!



Isabella Liguori (Ensemble) is a sophomore and is very excited to be a part of *Crush*! She appeared in *Metamorphoses*, *24 Hour Theatre* (2016 & 2017), and *Pippin* as well as musicals

in her middle school and elementary school. Congratulations to everyone in PV Theatre!

The Cast *continued*



Rachel McCambridge (Winn) is a junior. Crush is her fifth production with PV Theatre. Her past credits include *Letters to Sala* (Sara), *Urinetown* (Ensemble), *Metamorphoses* (Narrator, Eurydice) and *Pippin* (Ensemble). Outside of theatre, Rachel participates in the Environmental Club, and is the secretary of the International Thespian Society. She is so excited to be working on this show, and would like to thank everyone for an amazing experience.



Nick LoCicero (Ensemble) is a senior in his third year with PV Theatre. He was in *Spotlight* (Burlap Man), *Metamorphoses* (Ceyx, Hades), *Pippin* (Player) and was on crew for *Letters to Sala*. He is very excited for all the shows to come.



Emily Moriarty (Ensemble) is a sophomore who is very excited to participate in her second production at Pascack Valley. This entire experience has been such a great one and she can't wait to be a part of many more PV Theatre productions. She sends thanks to everyone who helped put the show together.



Natalie Moscatello (Devon) is very excited to be taking part in her first play at Pascack Valley and can't wait to see what the next four years hold.



Ryan Muska (Cole) Ryan is a senior. This is Ryan's sixth show at PV and he is very excited for it. He has been seen in the Holdrum MS musicals *Fame* (Schlomo), *The Little Mermaid* (Prince Eric), and as the title character in *Aladdin*. He was also in *Anything Goes* (Steward), *Letters to Sala* (Sidney), *Urinetown* (Bobby Strong), *Metamorphoses* (Vertumnus), and *Pippin* (Pippin). In his free time, he likes to read books, play soccer, and watch Netflix.



Zachary Panno (Bark) is a senior at PV and is stoked to perform in *Crush!* His debut performance was *Pippin* (Lewis), and he also performed in the 2017 *24 Hour Theatre Festival*, after writing a play for the 2016 Festival. He would like to thank his friends and family for the never-ending support they provide for him. Zack is very excited to return to the PV Theatre stage with this wonderful cast!



Kax Petkovich (Crooper) has been acting since he was a kid, and is excited to be a part of his 5th PV Theatre production. Recent credits include *The Philadelphia* (Al), *Letters to Sala* (Guard), *Urinetown* (Poor Ensemble), *In the Heights* (Graffiti Pete), *Metamorphoses* (Phaeton), *Pippin* (Head), *Finale* (Dylan Russ), and *Thoroughly Modern Millie* (Ching Ho). Hobbies include art, music, and bending the laws of reality and the space-time continuum. He also participates in PV's marching and jazz bands.

The Cast continued



Jaiden Price (Magdalena Seth) is a sophomore and has been acting for several years. Her most recent PV show was *Pippin* (Player). Outside of PV, she has appeared in *Wicked* (Elphaba),

Les Miserables (Jean Valjean) and *Into the Woods* (Witch). This past summer she had the opportunity to perform at the Recital Hall at Baruch College. She is looking forward to being a part of many more Pascack Valley productions! Jaiden is very grateful to the entire PV Theatre family.



Christina Quezada (Theodora Prokopiak) has been featured in *The Dining Room* (Grandmother), *Anything Goes* (Ensemble), *Urinetown* (Ensemble), *Metamorphoses* (Nurse-

maid), and *Pippin* (Player). Outside of theatre she is an active member of Harvesters.



Kyle Rifkin (Lincoln) is thrilled to be portraying Lincoln in PV Theatre's *Crush!* Past performances include *The Dining Room*, *The Night Shakespeare Rolled Over in His Grave*, *Spotlight on Table*

for Two, *Metamorphoses*, and a writer for PV Theatre's *24 Hour Theatre*.



Amy Santo (Claire de Lune Girl) is a senior who is very excited to be a part of Crush! This is her seventh show with PV Theatre, following *The Dining Room* (Sally/Carolyn),

Anything Goes (Ensemble), *Letters to Sala* (Young Sala), *Urinetown* (Hope Cladwell), *Metamorphoses* (Myrrha), and *Pippin* (Catherine). She is the President of the International Thespian Society and also a part of the Tri-M Music Honors Society. She is grateful for all this program has done for her and would like to thank the Luffers for their continued support. She would also like to thank her family for always being there. She is very proud to be a part of this company and wishes everyone a wonderful run!



Dylan Schnur (Ensemble) is a sophomore. As an actor, favorite roles he has played include: Warner in *Legally Blonde*, Coach Bolton in *High School Musical*, Captain of the Guards

in *Shrek*, Sweaty Eddie in *Sister Act*, and a player in *Pippin*. Dylan is honored to be a part of PV Theatre. He is most happy when he is going out for all-you-can-eat sushi.



TWEET THE CAST & CREW!

@PVTheatre #PVCrush

The Cast continued



Patrick Sheil (Firecrackamundo Announcer) is more than excited to be performing this year. Patrick has appeared in six prior PV Theatre shows, including *Anything*

Goes (Whitney), *Urinetown* (Fipp), *Metamorphoses* (Midas) and *Pippin* (Charles). When not partaking in the theatre experience, Patrick enjoys writing, listening to music, and playing video games, as well as spending time with his friends.



Jessica Snyder (Jessica) is a senior and this is her fourth mainstage play and 9th production at PV. Her recent credits include *Metamorphoses* (Midas's Daughter/ Psyche),

Urinetown (Student Choreographer/ Poor Ensemble), *Letters to Sala* (Laya Dina), *Anything Goes* (Angel) and *Pippin* (Player/Associate Choreographer). When not at rehearsals, she takes dance lessons, and works with the Interact Club. Jessica would like to wish the best of luck to the cast and crew of *Crush*!



Olivia Stabile (Ensemble) is a junior participating in her fifth mainstage show at PV Theatre. What is different, though, is that she is doing both cast and crew, having only

worked on crew in the past. Though it is intimidating, Olivia is ecstatic to be acting in her first show! She would like to thank her theatre family for always making her feel welcomed; whether she is recording the hell week video or rambling about who knows what. Break legs!



Kyle Towey (Ensemble) has been an actor since he was very young. This is his first production at PV and he is very excited! This is also his first straight play. He graduated St. John's

Academy in Hillsdale after playing the role of Simba in *The Lion King Jr.* He has participated in musical productions at St. Joe's (*Sister Act*, *The Wedding Singer*), as well as *The Will Rogers Follies* at Don Bosco Prep and *Joseph and the Amazing Technicolor Dreamcoat* at the Mayo Performing Arts Center in Morristown.

China Pavilion Restaurant



DELICIOUS CHINESE FOOD TO TAKE OUT

OPEN HOURS

Mon. - Thurs.: 11:00 am - 10:00 pm
 Fri. - Sat.: 11:00 am - 11:00 pm
 Sunday: 12:00 noon - 10:00 pm

655C Westwood Ave,
 River Vale N.J. 07675
 (Corner of River Vale Rd. & Westwood Ave.)



 Tel.: (201) 664 - 7766
 664 - 5414

The Crew



Construction and Painting Crew – Top Row (from L to R): Noah Joroff, Rachel Quezada, Shawn Rowan, Julianne Lopez, Sarah Tamagny, Reid Lauber. **Bottom Row (from L to R):** Olivia Stabile, Kristen Kiernan, Meghan Haggerty, Gus Koeniges, Heather Flatley. **In front:** Emily McAuliffe

Julianna Bermudez is so excited to be a part of this theater community, working on hair, makeup and costumes. She is very creative and is good at thinking on her feet. Julianna is most of the time excited and happy and can always put a smile on someone's face.

Heather Flatley is a senior and this will be her 7th show working on crew. She still hasn't accepted that this will be her final play and refuses to do so. She is extremely grateful for her crew family and wants to thank them for making theatre a home away from home. She wishes everyone luck in *Crush* and looks forward to working on *How To Succeed In Business Without Really Trying*. Break legs!

Jess Flatley is a sophomore. She was involved in *The 24 Hour Theatre Festival*, *Metamorphoses* and *Pippin* and she was previously in the cast of *Legally Blonde* and *High School Musical* at Holdrum MS. She is very excited to be a part of the costume crew these next few years of high school, and can't wait to work with the amazing people here.

Meghan Haggerty is a senior who has been working with PV Theatre since she entered high school. *Crush* is her seventh show and she can't wait to see how it turns out. Break legs!

The Crew continued



Costume, Hair, Makeup & Properties Crew – Top Row (from L to R): Tara Healy, Mackenzie Klink, Bridget McLearie, Cassidy Smith. **Bottom Row (from L to R):** Jordyn Puzzo, Jessica Flatley, Amelia Moran, Samantha Klink, Angelina Zervoudis.

Kristen Kiernan This is Kristen's first show with PV Theatre, she's excited to be a part of it! She has loved getting to know everyone in her crew family and can't wait to work on future shows. She loves meeting people with the same interest as her and coming together to create a beautiful set for an amazing show. Break a leg to everyone in the cast and crew of *Crush!*

Gus Koeniges is excited to be a part of construction crew for *Crush!* This is his second show with PV Theatre after appearing as Theo in *Pippin*. Best of luck to all the cast and crew of *Crush!* Break legs!

Reid Lauber Prior to entering PV, Reid spent three years on crew at George White MS, working as a Stage Manager, runner, and onstage. Reid was a part of crew for *Metamorphoses* and *Pippin* and is excited to be part of the PV Theatre crew and is looking forward to his next three years at Pascaek Valley. Break legs!

Julianne Lopez is a senior and this is her 6th show with PV Theatre. Her previous shows include *Anything Goes*, *Letters to Sala*, *Urinetown*, *Metamorphoses*, and *Pippin*. Julianne is looking forward to working on her last show with PV Theatre.

Emily McAuliffe is a junior and this will be her fifth show with PV Theatre. In past years she has worked on the crew of *Letters to Sala*, *Urinetown*, *Metamorphoses*, and *Pippin*. She has had a lot of fun in theatre and can't wait to work on more shows at PV.

Become a
Director's Circle Sponsor!

www.pvhstheatre.org

The Crew *continued*

Bridget McLearnie is a junior and she has worked on five shows with PV Theatre, appearing onstage in *Letters to Sala*, and working backstage for *Urinetown*, *24 Hour Theatre Festival*, *Metamorphoses*, and *Pippin*. She is proud to be a part of PV Theatre and is excited to work on *Crush*.

Amelia Moran is a junior. She has appeared in *High School Musical* (Gabriella), *Letters to Sala* (Rachel), *Urinetown* (Little Becky Two-Shoes) *Metamorphoses* (Oread) and *Pippin* (Player). This is her third play at PV and she is so excited to be a part of the PV Theatre family. It takes a lot of dedication and talent to put on shows of this quality and she thanks the Lufers so much for their amazing direction and enthusiasm and wishes everyone in the cast and crew the best of luck.

Jordyn Puzzo is a freshman working on her first PV Theatre production. She is proud of her crew and cast for all of the hard work they've done. She participated in all of the plays at George G. White MS and is super excited to be working on a play as awesome and different as *Crush*. She wishes everyone in *Crush* good luck and hopes that the audience loves the show!

Shawn Rowan is a senior at PV and this is his seventh show with PV Theatre. His previous show experience includes PV Theatre's *The Dining Room*, *Anything Goes*, *Letters to Sala*, *Urinetown*, *Metamorphoses*, and *Pippin*. Shawn is working on Construction Crew and the Sound Team for *Crush*. He hopes everyone has enjoyed working on *Crush* as much as he has. Break legs!

Lauren Shill has been involved in theatre for 8 years appearing in *Alice in Wonderland*, *Oliver!*, *Grease*, *A Chorus Line*, *Hairspray*, *Bye Bye Birdie*, and numerous other performances. She has been involved in The Saddle River Youth Theatre, Applause, Camp Louemma, and a production at Temple Emanuel.

Cassidy Smith is a junior and this will be her 5th show at PV. She is very proud of her cast and crew for all their hard work they put in the show. She is thrilled that everyone in Costume Crew has worked so hard and put their best efforts in the show. Cassidy is thankful for her family for supporting her. And she wishes everyone good luck!

Sarah Tamagny is very excited to be excited for this year's productions. She loves being a part of something where everyone has the same interests. Crew is like a family she is glad to have been involved in. She is excited for the future on crew!

Katerina Thomas This is Kat's first year doing Lady Crew, but 3rd year as a part of PV Theatre. She has been in the past 3 plays as an actress, but wanted to see what goes on behind the scenes.

Angelina Zervoudis This is her first year in PV Theatre and she plans to participate all four years. Outside PV, Angelina has worked on *A Chorus Line*, *Seussical*, *Bye Bye Birdie*, *Into The Woods*, *High School Musical*, *Cinderella*, and many more. She loves acting and singing and she is looking forward to more years to come.



**Please support the
advertisers who
support PV Theatre!**

Student Stage Management



STAGE MANAGEMENT from L to R: Leah Kay, Rachel Brunn, Josh Ozawa-Morriello, Ben Bachrach

Ben Bachrach (Production Stage Manager) is a senior, who was an Assistant Stage Manager for PV's productions of *Anything Goes*, *Letters to Sala*, *Urinetown*, *Metamorphoses*, and *Pippin*. He is excited to be the Production Stage Manager for the first time and wants to congratulate the cast and crew of *Crush*.

Rachel Brunn (Assistant Stage Manager) is a junior. This is her fifth show with PV Theatre. She was an assistant stage manager for *Letters to Sala*, *Urinetown*, *Metamorphoses*, and *Pippin*. She is so excited for the shows to come. Rachel also wants to wish the cast and crew of *Crush* good luck!

Leah Kay (Assistant Stage Manager) is a freshman and is very excited for what the next four years bring! She was a stage manager last year for George White's production of *Aladdin Jr.* She wishes everyone involved in this process good luck!

Josh Morriello (Assistant Stage Manager) is currently a senior, and participating for his first time in the stage management role, and his third show at PV overall. He has participated in *Metamorphoses* and *Pippin*, through the cast and pit orchestra respectively. He also has participated in many Honors Choirs, including the prestigious NJ All-State Choir.



Jack's Cafe

CATERING SPECIALIST FROM BBQ'S TO CORPORATE AFFAIRS

CHRIS D'ELETTO
OWNER/HEAD CHEF

325 BROADWAY
WESTWOOD, N.J
07675

RESTAURANT (201)666-0400
CELL (551)804-8033
CADCO45@NETZERO.NET
JACKSCAFENJ.COM

The Directors



Tom Lupfer (*Director/ Producer/Technical Director*) is a graduate of the Program in Educational Theatre at New York University, where he earned a M.A. He also holds a

B.A. in Theatre Arts from Susquehanna University. Currently, Tom is a drama teacher and Related Arts Subject Matter Leader at a performing arts magnet school in Montclair, NJ. In Spring 2018, his students will perform *Fiddler on the Roof*. In May 2015, Tom co-produced the documentary film *Ceremony for This Time*, premiering at the Montclair Film Festival. The film chronicles the creation of a performance piece celebrating the power of the performing arts in education.

The co-director/producer for PV Theatre since 2007, Tom is proud to collaborate with his wife Merielle, with whom he was honored to share the 2014 Montclair State University JoAnn Fox Award, given to a director who is: "an inspiration to his/her students, whose passion for theatre is infectious, and who creates a community, a loving extended family in his/her school in the process of producing high quality productions." Tom's favorite productions are his three-year-old twin daughters.



Merielle Lupfer (*Director/Costumer*) earned a B.S. from the Program in Educational Theatre at New York University. A 2001 alumna of PVHS, she is overjoyed

to give back to the program that was her initial training in the craft. As an actress, favorite roles she has played include: Helena in *A Midsummer Night's Dream*, Amy in *Company*, and various roles in *The Laramie Project*.

At PV, she has designed costumes, props and scenery, as well as co-directing since 2007. Merielle was honored to accept the 2014 JoAnn Fox Award honoring excellence in directing a HS Theatre program. She is most happy when she is at home with her family, which has grown to include her beautiful twin daughters.

The Writer

Stephen Gregg (Playwright) has written a wealth of perennially popular plays, including *This is a Test*, *Small Actors*, *Twitch*, *Sex Lives of Superheroes*, *S.P.A.R.*, *Poor Little Lambs*, and *Sunday Night*. He is the recipient of a Jerome Fellowship from The Playwrights' Center in Minneapolis; the Actors Theatre of Louisville Heideman Award for best ten-minute play; and the International Thespian Society's Founders Award. He writes the Playwright Now blog for the Educational Theatre Association at schooltheatre.org.

THANK YOU TO ALL OUR
DIRECTOR'S CIRCLE SPONSORS!



PV Theatre Cast and Crew - Best of luck on CRUSH! - The Culshaws

CONGRATULATIONS

JULIA AND THE ENTIRE CAST AND CREW OF CRUSH!!!!



*JULIA: YOU'RE AN AMAZING CHLOE AND
WE CAN'T BELIEVE IT'S ALREADY YOUR
SENIOR YEAR!! SEVEN SHOWS DOWN
AND ONLY ONE MORE TO GO!!!!*


WE LOVE YOU! BREAK A LEG!!!!

LOVE,
MOMMY, DADDY, PERI & POPPOP

Congratulations Kim and the rest of the cast and crew of CRUSH!

Best of luck in performance #7 at
PV Theatre.

We are so proud of you!

Love,
Mom, Dad, Justin-
the entire family
-and Callie too! 



**Best of luck to Zachary
and the entire Cast and
Crew of CRUSH!**

**Love Mom, Dad, Michael,
Tyler and Joe**



**Congratulations Patrick and the
entire cast and crew of CRUSH!**



**We love you and are so proud of you!
Dad, Mom, and Owen**

THANKS

KEN'S DELI
BREAKFAST - LUNCH - DINNER
OPEN 7 DAYS A WEEK
201-666-0401
114 BROADWAY, HILLSDALE, NJ

ANITA
DISCOUNT TIRE & AUTO
TIRE PROS

MICHELIN
BFGoodrich
Continental
GOODYEAR
HERCULES TIRES

678 Westwood Avenue River Vale, NJ 07675
P 201.664.2882 F 201.666.3904
www.anitatire.com

CONGRATULATIONS PV THEATRE!

Crecco's
Cafe



655 Westwood Avenue, River Vale, NJ 07675 • 201-664-7200

www.creccoscafe.com

WATCH OUT est. 1986

Watch and Jewelry Repair & Sales

Specializing in Antique Restoration

Diamonds, Colored Stones, Gold, Platinum, Pearls, etc.

Customized by Expert Jeweler

~ Professional Engraving ~

Hours: Tuesday - Saturday 9 AM - 5 PM

217 Center Avenue
Westwood, NJ 07675

Charles A. Bellon, Jr.
201-280-9126

www.thewatchmanwestwood.com



Yarn Diva and more
yarns, patterns & accessories

www.yarndiva07642.com

Ann Marie Santarelli
yarndiva430@aol.com

428 Hillsdale Ave, Hillsdale, NJ 07642 • 201-664-4100

Tuesday thru Saturday: 10 - 5, Wednesday: 12 - 6, CLOSED - Sunday and Monday

Maureen Sheil
 Independent Consultant #788048
 The Pampered Chef

☎ 201-981-7256 (text msg welcomed)
 ✉ maureen_sheil@yahoo.com

Shop 24/7 AWESOME outlet specials! www.pamperedchef.biz/maureensheilcooks
 If a 10 minute call could change your life wouldn't you call 630-261-3537?
 Cooking parties, Facebook parties, Catalog Parties, Bridal Registry, Bridal Showers, Fundraisers available
 The Referral of your friends & family is the greatest compliment you can give me. Thank you!



Nails Show
 Specializing in L.C.N. & Pink & White

Mon - Fri: 9:30 - 7:30
 Saturday: 9:00 - 6:00

(201) 594-1100
 424 Hillsdale Avenue
 Hillsdale, NJ 07642

Since 1960

Lisa's
 PIZZA

274 3rd Ave, Westwood, N.J.

(201)664-8676
www.LisasPizza.com



Best Little
HAIRHOUSE
in westwood

MEN'S, WOMEN'S & CHILDREN'S HAIR CUTS
 STYLING • COLOR • KERATIN TREATMENT
 WEDDINGS & SPECIAL EVENTS

{ **20% OFF** }
 ANY ONE SERVICE
Your service of all. May not be combined with any other offers.

Hours: Tues. 9am-5pm, Wed. 9am-8pm, Thur. 9am-8pm
 Fri. 10am-6pm, Sat. 9am-5pm

201-666-2284
 234 Westwood Ave., Westwood, NJ 07675

PV Theatre's production of *Crush* is proud to participate in the Montclair State University Foxy Awards, recognizing and rewarding excellence in high school plays.

PV Theatre proudly recognizes our previous award winners and nominees

Spring 2008 – SWEENEY TODD

PAPER MILL PLAYHOUSE RISING STAR AWARDS

Honorable Mention – Outstanding Performance by an Actor in a Leading Role: *Travis Alvarez as Sweeney Todd*

Fall 2008 – MUSEUM

MSU THEATRE NIGHT AWARDS

Winner – Achievement in Graphic Design: *Liz Lehman*

Winner – Achievement in Properties
Nominee – Best Modern Play; Best Director, *Tom and Merielle Luffer*; Best Ensemble Cast in a Production; Outstanding Scenic Achievement

Spring 2009 – SEUSSICAL

HELEN HAYES “METROS” THEATRE AWARDS

Winner – Outstanding Lighting Design: *Luke Krauss*
And seven other nominations

Spring 2009 – DISORIENTATION

MSU THEATRE NIGHT AWARDS

Nominee – Outstanding Supporting Actress: *Maja Kruegle as Beth*

Fall 2009 – UNDER MILK WOOD

MSU THEATRE NIGHT AWARDS

Nominee – Outstanding Supporting Actress: *Katherine Riley as Lily Smalls*

Spring 2010 – INTO THE WOODS

PAPER MILL PLAYHOUSE RISING STAR AWARDS

Nominee – Outstanding Performance by an Actor in a Supporting Role: *Brandon Essig as Jack*

Fall 2010 – COMPLETE WORKS OF WILLIAM SHAKESPEARE (ABRIDGED)

MSU THEATRE NIGHT AWARDS

Winner – Outstanding Production of a Comedy
Winner – Outstanding Performance by an Actor in Comedy, *Brandon Essig*
And seven other nominations, including Outstanding Overall Production

Spring 2011 – FOOTLOOSE

PAPER MILL PLAYHOUSE RISING STAR AWARDS

Nominee for Student Achievement – *Kelsey McGrail, Associate Choreographer*

Fall 2011 – THE LARAMIE PROJECT, AND TEN YEARS LATER

MSU THEATRE NIGHT AWARDS

Winner – Outstanding Production of a Drama
And seven other nominations, including Outstanding Overall Production

Fall 2012 – ROMEO & JULIET

MSU THEATRE NIGHT AWARDS

Winner – Outstanding Performance by an Actress in a Supporting Role in a Classic, *Kira Player*

Fall 2013 – DON’T DRINK THE WATER

MSU THEATRE NIGHT AWARDS

Winner – Outstanding Achievement in Scenic Design

Nominee – Outstanding Achievement in Stage Direction: *Tom Luffer & Merielle Luffer*; Outstanding Supporting Actress in a Comedy: *Alexis Parsells as Marion Hollander*; Outstanding Production of a Comedy

Spring 2014 – CABARET

PAPER MILL PLAYHOUSE RISING STAR AWARDS

Honorable Mention – Outstanding Performance by an Actor in a Leading Role, *Calvin Rezen*
Outstanding Performance by a featured Ensemble Group – *The Kit Kat Girls: Nicole Bellmay, Alexandra Brennan, Tyler Halligan, Anastasia Maltsev, Alexis Parsells, Allison Snider, Michelle Verkhoglaz, and Alyssa Zoll*

HELEN HAYES “METROS” THEATRE AWARDS

Nominee – Outstanding Leading Actor in a Musical: *Calvin Rezen as The Emcee*; Outstanding Supporting Actress in a Musical: *Katie Collins as Fraulein Schneider*; Outstanding Supporting Actor in a musical: *Lukas Kruegle as Herr Schultz*; Outstanding Acting Performance-Male: *Justin Culshaw as Cliff Bradshaw*; Outstanding Vocal Performance: *Maggie Capone as Sally Bowles*; Technical Merit Award – *Kristin Verost (Stage Manager) and Ariana Aguero (Asst. Stage Manager)*

Fall 2014 – THE DINING ROOM

MSU THEATRE NIGHT AWARDS

Nominee – Outstanding Supporting Actor in a Drama, *Calvin Rezen as Father/Ted/Jim*, Outstanding Scenic Design, Outstanding Lighting Design, Outstanding Stage Crew

Spring 2015 – ANYTHING GOES

PAPER MILL PLAYHOUSE RISING STAR AWARDS

Winner, Student Achievement Award – Student Choreographers, *Tyler Haligan and Alyssa Zoll*

HELEN HAYES “METROS” THEATRE AWARDS

Winner – Outstanding Supporting Actor, *Calvin Rezen as Moonface Martin*
Ten other nominations, including Outstanding Overall Musical

PV Theatre previous award winners and nominees, cont.

Fall 2015 – LETTERS TO SALA

MSU THEATRE NIGHT AWARDS

Winner – Outstanding Production of a Drama
Outstanding Lead Actress in a Drama, *Brenna Fitzmaurice as Ann Kirschner*; Outstanding Lighting Design, *Erin O'Brien*

Nominee – Outstanding Scenic Design;
Outstanding Overall Production of a HS Play; The Peter Filichia Award for Pushing the Envelope in Academic Theatre: *Tom & Merielle Luffer*; The Susan Kerner Award for Educational Impact and Community Outreach; Outstanding Supporting Actress in a Drama: *Laura Santo as Sala Kirschner*

Spring 2016 – URINETOWN THE MUSICAL

PAPER MILL PLAYHOUSE RISING STAR AWARDS

Honorable Mention – Outstanding Performance by a Featured Ensemble Group: *“The Poor”*

Nominee – Outstanding Hair and Makeup Design: *Merielle Luffer*

HELEN HAYES “METROS” THEATRE AWARDS

Winner – Outstanding Vocal Performance-Female: *Maggie Capone as Penelope Pennywise*

Nominee – Outstanding Featured Ensemble Member: *Laura Santo as Officer Lockstock*; Outstanding Featured Ensemble Group: *“The Poor/Rebels”*; Outstanding Production Number: *“Urinetown”*; Outstanding Chorus; Outstanding Student Critic: *Nicole Zamlout*; Outstanding Scenic Design

Fall 2016 – METAMORPHOSES

MSU THEATRE NIGHT AWARDS

Winner – Outstanding Achievement by the Acting Ensemble of a Drama

Nominee – Outstanding Work of Innovation and Invention; Outstanding Achievement in Choreography or Movement; The Peter Filichia Award for Pushing the Envelope in Academic Theatre: *Tom & Merielle Luffer*; Outstanding Achievement in Lighting Design: *Erin O'Brien*; Outstanding Production Number: *“Urinetown”*; Outstanding Achievement in Scenic Design; Outstanding Stage Crew

Spring 2017 – PIPPIN

PAPER MILL PLAYHOUSE RISING STAR AWARDS

Honorable Mention – Outstanding Coreography & Staging: *Francesca Silvano, Kelsey McGrail, Merielle Luffer*

HELEN HAYES “METROS” THEATRE AWARDS

Nominee – Outstanding Scenic Design: *Merielle Luffer*; Outstanding Musical Direction: *Michael Mahadeen*; Outstanding Student Critic: *Jamie Ryu*; Outstanding Duet: *“Love Song” – Amy Santo and Ryan Muska*; Outstanding Production Number: *“Magic to Do”*




MARC'S
DELI & PIZZA

14 Park Avenue
Park Ridge, NJ 07656

201-391-4333
Fax: 201-573-8878
www.MaresDeli.com

CATERING FOR ALL OCCASIONS
OPEN 7 DAYS • WE DELIVER

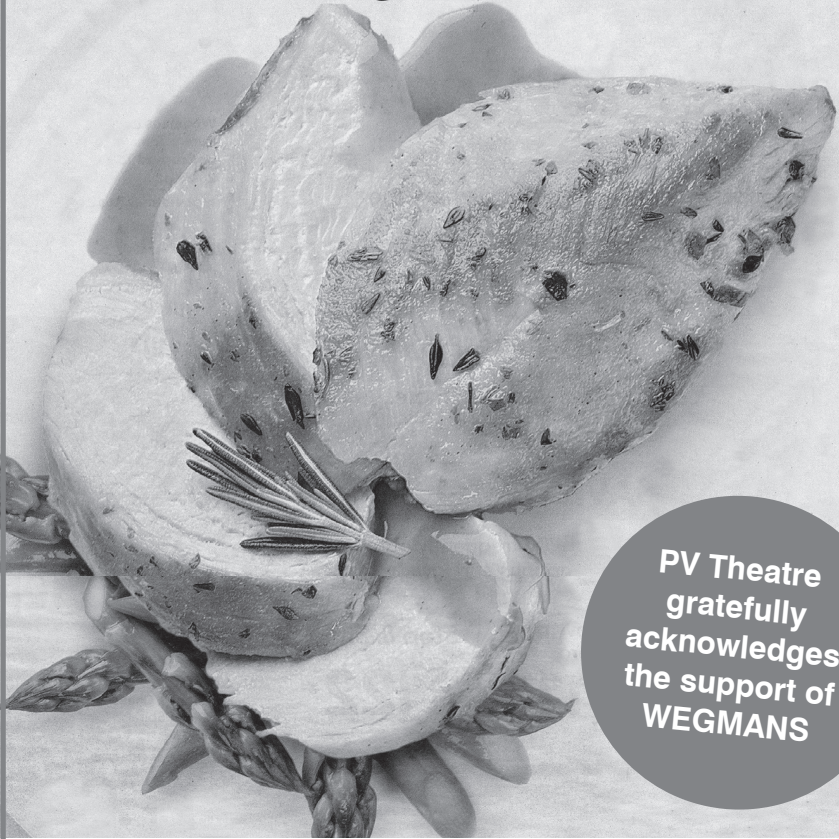
MAX PETROVICI
congratulations on
CRUSH



YOU ARE OUT OF THIS WORLD
LOVE MOM, DAD, EMMA AND CHLOE

food shopping will never be the same

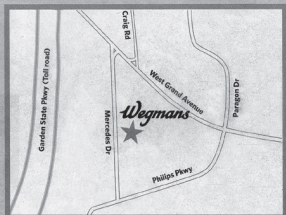
Wegmans Food Markets



PV Theatre
gratefully
acknowledges
the support of
WEGMANS

Your Montvale Store is Now Open

100 Farm View, Montvale, NJ 07645
(551) 249-2200 • Open 6am-Midnight



Thank You!

We extend our sincere thanks and gratitude to the following businesses, families and organizations who are supporting our award-winning Theatre program through the PV Director's Circle Sponsorship program.

FAMILY SPONSORS

The Culshaw family
 The Ganbarg Family
 The Ligouri Family
 The Panno Family
 The Petkovich Family
 The Sheil Family

PATRONS OF THE ARTS

Domani Ristorante Italiano
 Della Cucina Ristorante & Pizzeria
 Chicken Delight
 Ehmer's Quality Meats
 Wegmans Food Markets



JOIN PVHS THEATRE DIRECTOR'S CIRCLE

PVHS Theatre Sponsors have a keen interest in nurturing artistic excellence and contributing to the overall success of our high school performing arts program.

We are grateful for the generous support of all our sponsors who receive many of the following benefits:

- Ads in our professionally-designed keepsake playbills
- Reserved tickets to our staged productions
- Acknowledgement on the sponsor page of our playbill
- PV Theatre gear
- Premium size and placement of playbill ads
- Company logo/link on www.pvhstheatre.org



Sponsorships for full season begin at only \$140

PVHS THEATRE HISTORY

Pascack Valley High School has produced plays and musicals since the school's inception in 1955. There are "holes" in this list. If you can help fill them in, please e-mail Mr. Lupfer at tlupfer@pascack.org. Thank you!

'55-'56	<i>The Remarkable Incident at Carson Corners</i> (Sr. Drama)	'87-'88	<i>Bye Bye Birdie</i> (Musical)
'56-'57	<i>Tiocoli</i> (Musical)	'88-'89	<i>A Murder Has Been Arranged</i> (Drama)/ <i>Guys and Dolls</i> (Musical)
'57-'58	<i>Cheaper by the Dozen</i> (Drama)	'89-'90	<i>Brighton Beach Memoirs</i> (Drama)/ <i>The King and I</i> (Musical)
'58-'59	<i>Arsenic and Old Lace</i> (Drama)	'90-'91	<i>Take Three for a Comedy</i> (Drama)/ <i>Mame</i> (Musical)
'59-'60	<i>You Can't Take it With You</i> (Jr. Drama)/ <i>The Male Animal</i> (Sr. Drama)/ <i>Bridgdoon</i> (Musical)	'91-'92	<i>Lend Me a Tenor</i> (Drama)/ <i>Anything Goes</i> (Musical)
'60-'61	<i>The Curious Savage</i> (Jr. Drama)/ <i>Pygmalion</i> (Sr. Drama)/ <i>Finian's Rainbow</i> (Musical)	'92-'93	<i>Little Shop of Horrors</i> (Musical)
'61-'62	<i>Out of the Frying Pan</i> (Jr. Drama)/ <i>The Night of January 16th</i> (Sr. Drama)/ <i>Hit the Deck</i> (Musical)	'93-'94	<i>Play On!</i> (Drama)/ <i>Pippin</i> (Musical)
'62-'63	<i>Lo and Behold</i> (Jr. Drama)/ <i>Our Town</i> (Sr. Drama)/ <i>The Music Man</i> (Musical)	'94-'95	<i>Twelve Angry Jurors</i> (Drama)/ <i>The Wiz</i> (Musical)
'63-'64	<i>Only Orphan Girl</i> (Frosh-Soph)/ <i>Harvey</i> (Jr.-Sr)/ <i>Oklahoma</i> (Musical)	'95-'96	<i>M*A*S*H</i> (Drama)/ <i>Fiddler on the Roof</i> (Musical)
'64-'65	<i>See How They Run</i> (Drama)/ <i>The Many Loves of Dobie Gillis</i> (Drama)/ <i>South Pacific</i> (Musical)	'96-'97	<i>The Paper Chase</i> (Drama)/ <i>Jesus Christ Superstar</i> (Musical)
'65-'66	<i>Although You Can Hide</i>	'97-'98	<i>A Few Good Men</i> (Drama)/ <i>A Funny Thing Happened on the Way to the Forum</i> (Musical)
'66-'67		'98-'99	<i>Detective Story</i> (Drama)/ <i>South Pacific</i> (Musical)
'67-'68	<i>Damn Yankees</i> (Musical)	'99-'00	<i>Done to Death</i> (Drama)/ <i>Cabaret</i> (Musical)
'68-'69		'00-'01	<i>You Can't Take It With You</i> (Drama)/ <i>Brigadoon</i> (Musical)
'69-'70	<i>Wait Until Dark</i> (Drama)	'01-'02	<i>Inherit the Wind</i> (Drama)/ <i>Sweet Charity</i> (Musical)
'70-'71	<i>L'il Abner</i> (Musical)	'02-'03	<i>Flowers for Algernon</i> (Drama)/ <i>Anything Goes</i> (Musical)
'71-'72	<i>The Skin of Our Teeth</i> (Drama)	'03-'04	<i>The Sting</i> (Drama)/ <i>Pippin</i> (Musical)
'72-'73	<i>Arsenic and Old Lace</i> (Drama)/ <i>Carnival!</i> (Musical)	'04-'05	<i>Sudden Theatre</i> (Drama)/ <i>Over Here!</i> (Musical)
'73-'74	<i>Bye Bye Birdie</i> (Musical)	'05-'06	<i>Spoon River Anthology</i> (Drama)/ <i>Working</i> (Musical)
'74-'75	<i>The Music Man</i> (Musical)	'06-'07	<i>Comedy Threesome</i> (Drama)/ <i>Fame</i> (Musical)
'75-'76	<i>The Pajama Game</i> (Musical)	'07-'08	<i>A Midsummer Night's Dream</i> (Drama)/ <i>Sweeney Todd: The Demon Barber of Fleet Street</i> (Musical)
'76-'77	<i>Annie Get Your Gun</i> (Musical)	'08-'09	<i>Museum</i> (Drama)/ <i>Seussical</i> (Musical)/ <i>Disorientation</i> (Drama, World Premiere)
'77-'78	<i>The Children's Hour</i> (Drama)/ <i>L'il Abner</i> (Musical)	'09-'10	<i>Under Milk Wood</i> (Drama)/ <i>Into the Woods</i> (Musical)
'78-'79	<i>Angel Flies</i> (Drama)/ <i>Flower Drum Song</i> (Musical)	'10-'11	<i>The Complete Works of William Shakespeare (Abridged)</i> (Drama)/ <i>Footloose</i> (Musical)
'79-'80	<i>Look Homeward Angel</i> (Drama)/ <i>Flower Drum Song</i> (Musical)	'11-'12	<i>The Laramie Project, & Ten Years Later</i> (Drama)/ <i>The Pajama Game</i> (Musical)
'80-'81	<i>Once Upon a Mattress</i> (Musical)		
'81-'82	<i>Twelve Angry People</i> (Drama)/ <i>Carnival!</i> (Musical)		
'82-'83	<i>Pippin</i> (Musical)		
'83-'84	<i>The Spiral Staircase</i> (Drama)/ <i>South Pacific</i> (Musical)		
'84-'85	<i>Gypsy</i> (Musical)		
'85-'86	<i>Hello Dolly</i> (Musical)		
'86-'87			

PVHS Theatre History, cont.

'12-'13	<i>Romeo & Juliet</i> (Drama)/ <i>Curtains</i> (Musical)/ <i>Forbidden PV Theatre</i> (Musical Revue)	'15-'16	<i>Spotlight '15</i> (One Acts)/ <i>Letters to Sala</i> (Drama)/ <i>Urinetown the Musical</i> (Musical)
'13-'14	<i>Spotlight '13</i> (One Acts/Scenes)/ <i>Don't Drink the Water</i> (Drama)/ <i>Cabaret</i> (Musical)	'16-'17	<i>24 Hour Theatre Festival</i> (One Acts)/ <i>Metamorphoses</i> (Drama)/ <i>Pippin</i> (Musical)
'14-'15	<i>The Dining Room</i> (Drama)/ <i>Anything Goes</i> (Musical)/ <i>The Night Shakespeare Rolled Over In His Grave</i> (One Acts)	'17-'18	<i>24 Hour Theatre Festival</i> (One Acts)/ <i>Crash</i> (Drama)/ <i>How to Succeed in Business Without Really Trying</i> (Musical)

Next on our stage

JANUARY 8, 2018 7:00pm – ITS Induction

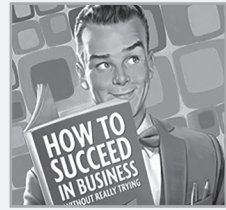
Plus, look for ITS events, fundraisers and performances throughout the year.



MARCH 15-17, 2018

Our Spring Musical *How to Succeed in Business Without Really Trying*

Big business means big laughs in this delightfully clever lampoon of life on the corporate ladder. A tune-filled comic gem that took Broadway by storm, winning both the Tony Award for Best Musical and a Pulitzer Prize, *How to Succeed in Business without Really Trying* boasts an exhilarating score by Frank Loesser, including "I Believe in You," "Brotherhood of Man" and "The Company Way."



MARCH 27, 2018

5th Annual Taste of PV Theatre

Join us at the River Vale Country club for a memorable evening as we raise funds to benefit PVHS Theatre. The fare features delicious tastings from fine area restaurants & caterers, as well as a cash bar, basket raffles, prizes, music and entertainment.



216 Old Tappan Road (Bi-State Plaza)
Old Tappan, NJ 07675
201-666-0688
www.johnanthonyhairsalon.com



M | MANIA
HAIR
STUDIO

Bergen County's Award Winning Destination For
Hair Makeup Nails Wax Organic Spray Tan

maniahair.com



**SOUTHERN ITALIAN COOKING
AT ITS BEST.**

PHONE +1 (201) 722-8880

ADDRESS 100 Park Ave
Hillsdale, NJ 07642

HOURS Mon -Sat 11am – 10pm
Sunday 12pm – 9pm



DON'T COOK TONIGHT, CALL...



Don't Cook Tonight, Call...

**CHICKEN
DELIGHT**[®]

**SINCE
1973**

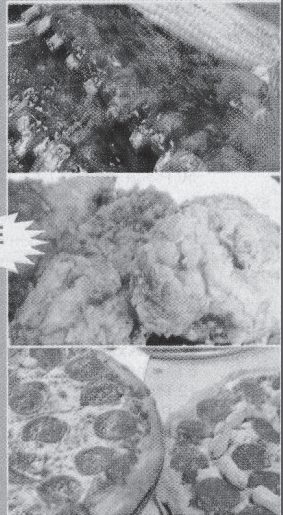
**100 Broadway
HILLSDALE**

www.ChickenDelightHillsdale.com

201 666-8828

HOT HOME DELIVERY

Open 7 Days A Week 11AM-10PM



We're a well-rounded team!

PVHS Theatre participants are more than just actors, builders, and painters-- they are also active participants in the PVHS community. Here's a sampling for what they do:

4 PVHS SPORTS TEAMS

- Cheerleading
- Softball
- Spring Track
- Volleyball

22 PVHS CLUBS

- Art Club
- A/V Club
- Bro Squad
- Camp Raspberry
- DECA
- Environmental Club
- Executive Council

- Gender and Sexuality Coalition
- Habitat for Humanity
- Human Rights League
- Harvesters
- Interact Club
- Light the Candle
- Love Isn't
- Navigators
- Our Minds Matter
- Outside/In (Literature and Arts Magazine)
- PAW
- Peer Leaders

- Robotics Team
- Smoke Signal
- World Culture Club

5 HONOR SOCIETIES

- National Honor Society
- International Thespian Society
- Italian National Honor Society
- Science National Honor Society
- Tri-M Music Honor Society

Congratulations to this amazing group of talented, spirited (and busy) students!

"STILL THE BEST BUTCHER ON THE BLOCK..."



Karl Ehmer of Hillsdale

120 Broadway,
Hillsdale NJ

Hours:

Monday - Thursday 8-6,
Friday 8-6:30, Saturday
8-5 and Sunday closed.

(201) 664-1477

THE GAMEZONE



BUY. SELL. TRADE. PLAY.

We specialize in new and pre-owned games, systems and accessories from all gaming generations.

(201) 358-6800

106 Broadway, Hillsdale NJ



★ Acting Techniques ★ Dance for Musical Theater ★ Improvisation ★ Stage Combat

★ Speech and Diction ★ Audition Skills ★ Monologues ★ Individual Voice Lessons

Broadway Theater Workshops

The premiere theater program in Bergen, Rockland & Westchester

In residence at St. Joseph Regional HS, Montvale, NJ

Congrats to the cast, crew and production team of



YEAR-ROUND LESSONS AND WORKSHOPS GRADES K-12!

Vocal Training ★ Dance ★ Acting ★ College Prep ★ Chorus ★ Piano ★
Grammar School Production ★ Specialty Workshops ★ Summer Camp

SUMMER THEATER CAMP
REGISTRATION BEGINS IN FEBRUARY! BTWSTARS.COM
CAMP INSTRUCTORS ARE BROADWAY PROFESSIONALS

Senior Theater Camp
Grades 7 - 12
July 23 – August 3

Advanced Theater Camp
Grades 9 - 12
(Audition Required)
July 23 – August 3

Junior Theater Camp
Grades 3 - 7
July 9 – July 20

Performance Camp
Grades 7 – 12
2018 Production TBA
August 6 – August 18

What makes us different?

The Broadway Theater Workshops program at SJR (workshops, summer camps, school musicals, and plays) prides itself on being different than other programs in the following ways:

- ★ We strive to create a SAFE and SUPPORTIVE environment
- ★ We stress and dedicate time to the PROCESS as compared to just the product
- ★ We give INDIVIDUAL ATTENTION and PERSONALIZED INSTRUCTION
- ★ Our staff is made up of BROADWAY STARS with great teaching experience and up and coming theater professionals who give students a unique and fun theater experience
- ★ We realize PERFORMING IS FUN, more so when you know what you are doing
- ★ We offer MULTI LEVEL PROGRAMS so students at all stages get the most out of their training
- ★ We help students develop a FULL UNDERSTANDING of dramatic theory, context and action and apply the tools of movement language, sound and music

**Scholarships
Available!**

Visit www.BTWSTARS.com

